

David Lean Room & Foyer Bar: Features

FLOOR LEVEL 1st

DIMENSIONS David Lean Room

Length 48'1" / 14.66m
 Width 41'4" / 12.59m
 Area 1,968' / 184.57m
 Max Height 11'1" / 3.39m
 Min Height 11'6" / 3.5m

Stage Dimensions

16' / 4.8m x 4' / 1.21m (available to hire)

DIMENSIONS Foyer Bar

Length 41'10" / 12.76m
 Width 26'4" / 8.3m
 Area 1,066'2" / 105.91m
 Max Height 11'1" / 3.39m
 Min Height 11'6" / 3.5m

PROJECTOR David Lean Room

(SDI, HDSDI, RGB, Comp Video)
 BARCO SLMR 12 video/data projector

Image projection size

Max 10' / 3.07m width
 Min 6' / 1.86m width

SEPERATING DOORS BETWEEN DLR & FOYER BAR

Height 9'2" / 2.8m
 Width 20'6" / 6.25m

CAPACITY

Theatre 200 (DLR only)
 Classroom 100 (DLR only)
 Boardroom 80 (DLR only)
 U-shape 70 (DLR only)
 Lunch/Dinner DLR 204 max (17 round 6'
 tables x 12); 180 with buffet/stage etc (15 x 12);
 Foyer Bar 80
 Reception DLR 250 (350 combined with Foyer
 Bar area); Foyer Bar 150/180
 Minimum DLR 60

LIGHTING

Tungsten and Flouresent Both
 Controls in Room Yes
 Dimmers Yes
 Windows Yes

SOUND

Sound System fitted to DLR; Restricted Sound
 System fitted to Foyer Bar (no PA system)

POWER

No of 13 amp sockets DLR 65;
 Foyer Bar 20
 3-phase available Yes
 Phone sockets DLR 54; Foyer Bar 14
 Phone Lines DLR 17; Foyer Bar 14 (17 available at
 one time in the whole building)
 ISDN Lines 6 available at one time in the whole
 building

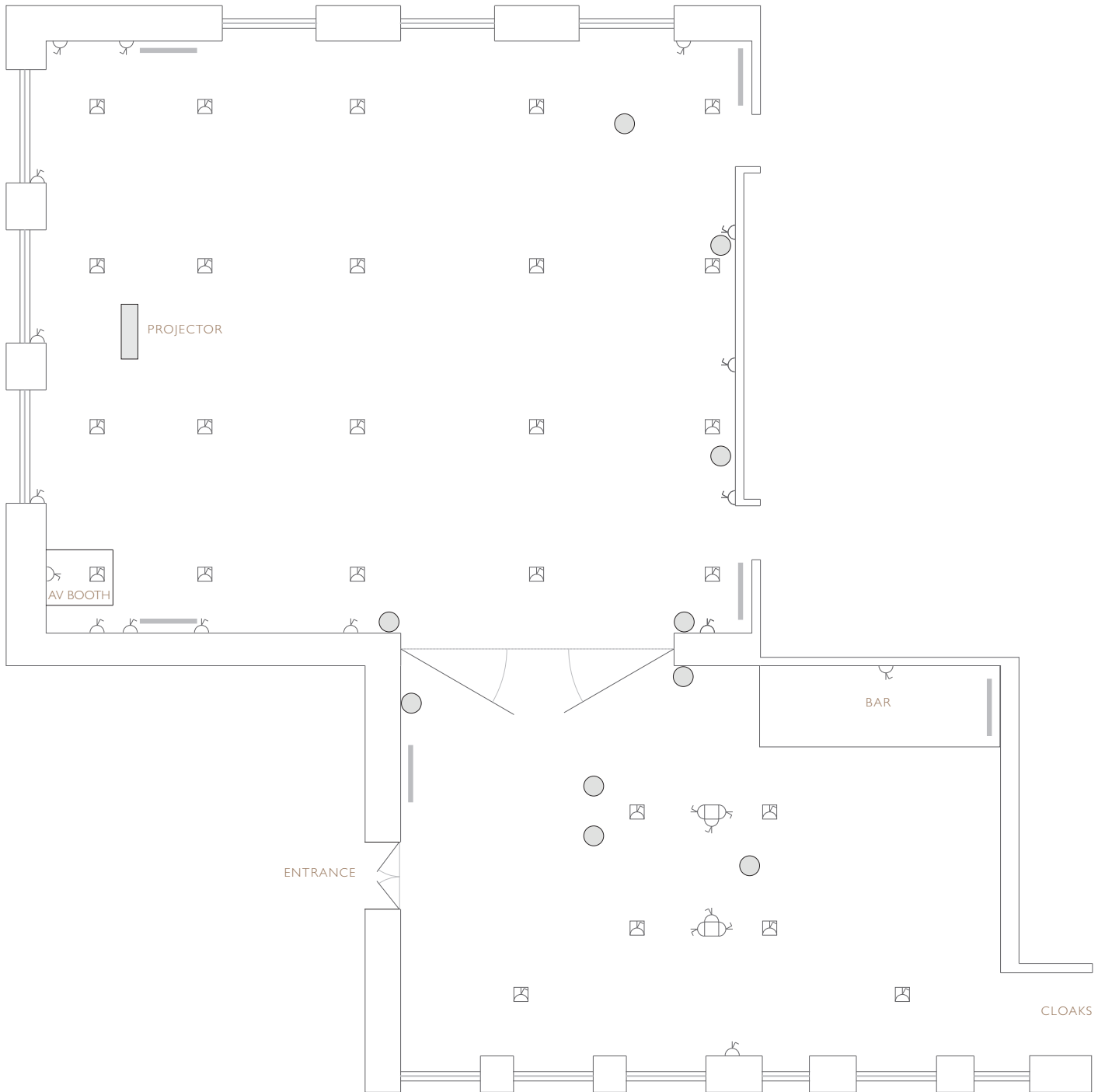
ACCESS DLR

Door Height 6'6" / 1.98m
 Door Width Variable





ACCESS FOYER BAR

Door Height 6'6" / 1.98m
 Door Width 4'1" / 1.25m

David Lean Room & Foyer Bar



The British Academy Award is based on a design by Mitzi Cunliffe.

-  Floor mounted electrical socket outlet
-  Wall mounted electrical socket outlet
-  Plasma screen
-  Speaker