

The BAFTA Treasure Hunt Challenge



"We had a marvellous time. You managed to get a load of deskbound city lawyers to spend a day following clues and riddles around the streets of London. The team was challenged and really enjoyed it – a great team building day."

O2 UK

The BAFTA Treasure Hunt Challenge works brilliantly as an energising morning or afternoon conference breakout session or as a fitting finale to a successful conference.

Set around BAFTA's Piccadilly location, the challenge takes in some of the most interesting parts of London, including Jermyn Street, Mayfair, Soho and Chinatown.



The host of the event opens the proceedings with an amusing introduction that can include insights into the company and also some of those who will be taking part in the challenge itself. This biographical and company information would have been gathered from the client prior to the event.

The guests are divided into 5 teams, each of which has a Team Leader. Each Team Leader is given a 'London Challenge' bag that contains all each team will need in order to complete this very special task! The Treasure Hunt Challenge can be adapted to fit in to your conference agenda and can typically last for between 2 and 3 hours.



The challenge consists of an exciting number of tasks that take place within five clearly defined 'zones'. Each team begins the challenge in their team number's corresponding zone. At the end of each zone's allocated time, each team then rotates to the next zone. For Example, Team 4 move to Zone 5 and Team 5 move to Zone 1.

ZONE 1



'Apples & Pears!'

Set amongst the atmospheric surroundings of Soho, this zone takes the vibrant Berwick Street Fruit Market, the film industry's Wardour Street and some of 18th Century London's most beautiful back streets.

In this zone, the teams are set a number of tasks and challenges, including testing their cockney credentials and discovering a number of local landmarks within a very strict time frame!

ZONE 2

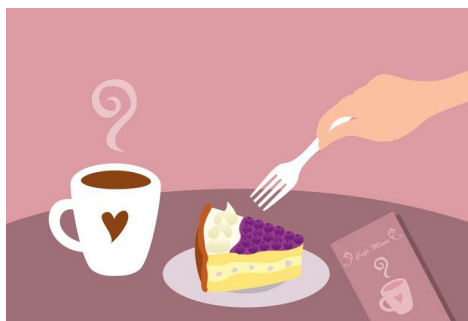


'The China Town Time Bomb!'

This zone starts under the spectacular China Town Gate, where the teams have to complete the **'Fetch n' Find' Challenge** against the clock! The challenge consists of answering a number of questions, the answers to which reveal the Chinese item that needs to be purchased.

Not only are there tight time restraints, but also the team has a very tight budget too!

ZONE 3



'Café Society'

The tasks in this zone include finding a man in a uniform, identifying various works of art and answering a number of local history questions – all this whilst sampling the delights of some of Mayfair's finest coffee and tea houses.

ZONE 4



'Suits you, Sir!'

This zone takes in Fortnum & Mason, Jermyn Street, Duke of York Street and St James's Square. The challenge in this zone is to complete a number of tasks by following a fascinating photo trail.

ZONE 5



'Lady Luck!'

This Zone takes place at St James's Church on Piccadilly. The first task in this zone is to find a mysterious lady (*played by a professional actress*) who on being challenged, issues the team with document that must be completed. She also tests the team's artistic talents by asking them to construct an object that has some relevance to your company.

End of London Challenge

After all the teams have completed all of the zones, they are told at the end of their final zone to make their way back to BAFTA.

The teams then enjoy light refreshments or continue with their conference agenda whilst our team mark the challenge. We will then return and announce which team will be crowned the BAFTA London Treasure Hunt Champions!

The London Challenge is a fantastic team building event, full of variety, fun and excitement!

"It was great to have a light hearted session outdoors, it kept everyone energised for the remaining indoors brainstorming and strategy sessions."

PricewaterhouseCoopers

Included in the event

- A research day in the chosen area for the London Challenge
- Writing the tailor-made London Challenge
- London Challenge pack
- Props for the different challenges
- Meeting Actor en route
- Event Manager
- Professional Host
- Event co-ordination & Office support

Costing

From £1950 plus VAT – this allows up to 6 teams of 10.

Please call to discuss the treasure hunt if numbers are over 60 people

Extras

- Prizes for the winning team
- We sometimes ask teams to purchase small items en route as part of a challenge. You would need to provide each team with approx £5
- Food and refreshment for our hosts
- PA & Microphones etc